

RACK CABINETS CATALOGUE



THE SAFEST, MOST FUNCTIONAL AND CERTIFIED RACK CABINETS



ENOLGASITECH is the “totally made in Italy” metallic workshop which plans, controls and manages the entire production chain of standard racks and optional components. The result is a high-tech and high-quality product which is also extremely functional. It is certified and guaranteed for duration (first quality CE materials) and performance. The ENOLGASITECH rack cabinets are recommended for high-stress environments



SOLUTIONS MAKING THE MOST OF PROFESSIONAL SPACES.



Rack cabinets by ENOLGASITECH enhance all habitats they are put in, besides being strongly characterized by innovation and technology. Thanks to their high performances they are not only suitable for server rooms, but for professional spaces in general. Hegel and Balzac series, with their ergonomic modules and energy saving technology, are more and more appreciated by small and large enterprises as well as by professionals.

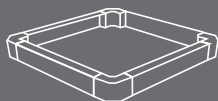


THE DESIGN WHICH COMPLETES YOUR LIVING SPACE



Our designers created highly stylish rack cabinets, in line with italian craftsmanship. ENOLGASITECH is technology, environmentally-friendly attitude and utmost attention to the phases of painting and recycling of working waste.





P.10

FLOOR CABINETS

SERIES HEGEL

P.18

WALL CABINETS

SERIES BALZAC

P.27

COMPONENTS

- FRAMES
- EXTENSIONS
- DUCTS
- SOCKETS
- PLATES



P.31

ACCESSORIES

WIRES HANDLING

SHELVES

PANELS

PATCH PANELS

VENTILATION

FIBER OPTIC DRAWERS

GROUNDING SYSTEM KIT

LEGS

POWER STRIPS

WHEELS



FLOOR RACK CABINETS

SERIES

HEGEL



Hegel. A high-tech instrument guaranteeing maximum data security and protection. What makes HEGEL cabinets unique are the airflow holes present in its pedestal. Such ergonomic holes enable a better air circulation, as they create opposing airflows and contribute therefore both to an efficient inside cooling and a significant energy saving. Hegel technology guarantees the same high-level performances even if there is more than one rack close together.



FLOOR RACK CABINETS

SERIES

HEGEL



HEGEL BLACK
Q9005



HEGEL GRAY
C7035

DIMENSIONS AND CODES

		Commercial dimensions			Real Dimensions					
Configuration code Black: Q / Gray: C		H mm	L mm	P mm	H mm	L mm	P mm	U / HE	U / HE vertical	U / HE sides roof
A1200Q21	A1200C21	1200	600	600	1185	600	600	24	-	9
A1200Q22	A1200C22	1200	600	800	1185	600	800	24	-	9
A1200Q23	A1200C23	1200	600	1000	1185	600	1000	24	-	9
A1200Q24	A1200C24	1200	800	600	1185	800	600	24	4+4x2	2+9x2
A1200Q25	A1200C25	1200	800	800	1185	800	800	24	4+4x2	2+9x2
A1200Q26	A1200C26	1200	800	1000	1185	800	1000	24	4+4x2	2+9x2
A1200Q31	A1200C31	1500	600	600	1485	600	600	30	-	9
A1200Q32	A1200C32	1500	600	800	1485	600	800	30	-	9
A1200Q33	A1200C33	1500	600	1000	1485	600	1000	30	-	9
A1200Q34	A1200C34	1500	800	600	1485	800	600	30	4+4x2	2+9x2
A1200Q35	A1200C35	1500	800	800	1485	800	800	30	4+4x2	2+9x2
A1200Q36	A1200C36	1500	800	1000	1485	800	1000	30	4+4x2	2+9x2
A1200Q51	A1200C51	1800	600	600	1785	600	600	37	-	9
A1200Q52	A1200C52	1800	600	800	1785	600	800	37	-	9
A1200Q53	A1200C53	1800	600	1000	1785	600	1000	37	-	9
A1200Q54	A1200C54	1800	800	600	1785	800	600	37	6+6x2	2+9x2
A1200Q55	A1200C55	1800	800	800	1785	800	800	37	6+6x2	2+9x2
A1200Q56	A1200C56	1800	800	1000	1785	800	1000	37	6+6x2	2+9x2
A1200Q61	A1200C61	2000	600	600	1985	600	600	42	-	9
A1200Q62	A1200C62	2000	600	800	1985	600	800	42	-	9
A1200Q63	A1200C63	2000	600	1000	1985	600	1000	42	-	9
A1200Q681	A1200C681	2000	600	1200	1985	600	1200	42	-	12x2
A1200Q64	A1200C64	2000	800	600	1985	800	600	42	6+6x2	2+9x2
A1200Q65	A1200C65	2000	800	800	1985	800	800	42	6+6x2	2+9x2
A1200Q66	A1200C66	2000	800	1000	1985	800	1000	42	6+6x2	2+9x2
A1200Q682	A1200C682	2000	800	1200	1985	800	1200	42	6+6x2	2+12x2
A1200Q71	A1200C71	2200	600	600	2185	600	600	46	-	9
A1200Q72	A1200C72	2200	600	800	2185	600	800	46	-	9
A1200Q73	A1200C73	2200	600	1000	2185	600	1000	46	-	9
A1200Q781	A1200C781	2200	600	1200	2185	600	1200	46	-	12x2
A1200Q74	A1200C74	2200	800	600	2185	800	600	46	8+8x2	2+9x2
A1200Q75	A1200C75	2200	800	800	2185	800	800	46	8+8x2	2+9x2
A1200Q76	A1200C76	2200	800	1000	2185	800	1000	46	8+8x2	2+9x2
A1200Q782	A1200C782	2200	800	1200	2185	800	1200	46	8+8x2	2+12x2

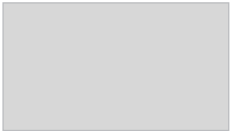
HOW WE CREATE OUR CODES

The example refers to an HEGEL cabinet with a glass front door, colour Q9005 RAGG, sizes 1200x600x600

A1200 Q 21
door and back side configuration colour size

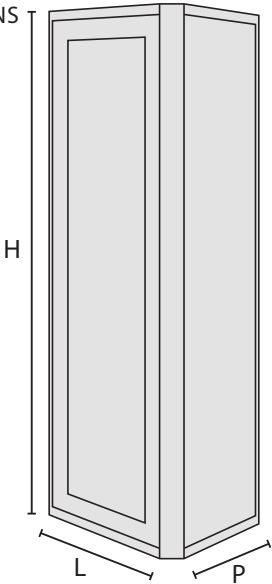


9005 RAGG Q



7035 BUCC C

DIMENSIONS



FLOOR RACK CABINETS

SERIES

HEGEL

GLASS FRONT DOOR

MESH FRONT DOOR



A1200 Front blank slot



A1204 Front blank slot cover



A1202 Front net panel



A1205 Front net panel



A1203 Back Double mesh door



A1206 Back Double mesh door

STANDARD CONFIGURATIONS

FRONT DOOR WITH MESH

BLANK FRONT DOOR



A1207 Front blank slot cover



A1210 Front blank slot cover



A1208 Front net panel



A1211 Front net panel



A1209 Back Double mesh door



A1212 Back Double mesh door

FLOOR RACK CABINETS

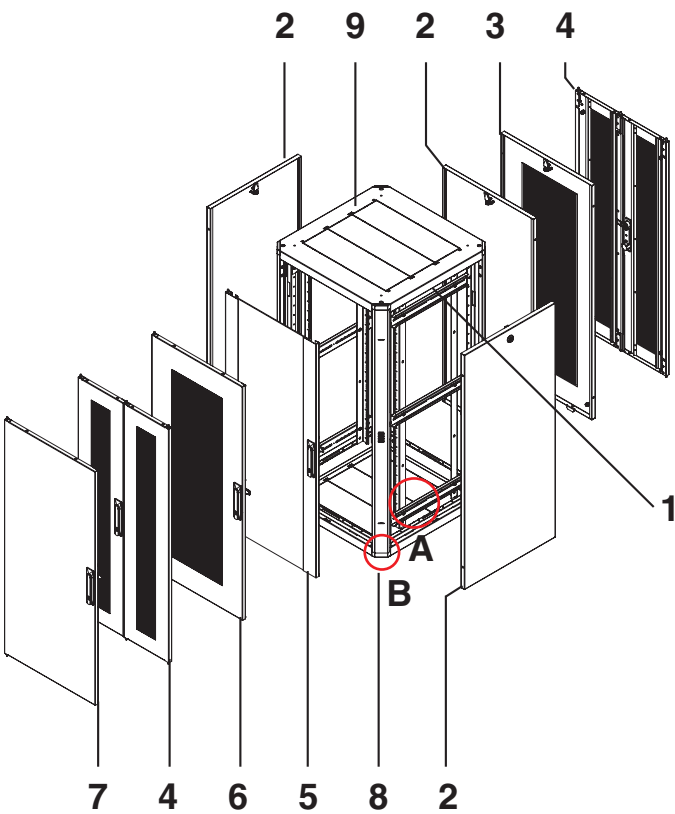
SERIES

HEGEL

DOORS



TECHNICAL CHARACTERISTICS

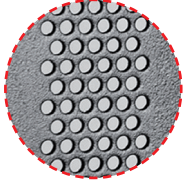


N°Description	Material	Treatment
1 Structure	EN10130 sp 1,5 mm	Painted
2 Blind panel	EN10130 sp 1 mm	Painted
3 Net panel	EN10130 sp 1 mm	Painted
4 Door with divided mesh	EN10130 sp 1,2 mm	Painted
5 Glass door	EN10130 sp 1,2 mm	Painted /tempered glass
	Fumé grey 4 mm glass sp. 4 mm	UNI EN 1288-3
6 Mesh door	EN10130 sp 1,5 mm	Painted
7 Blank door	EN10130 sp 1,2 mm	Painted
8 Frames	EN10346 sp 2 mm	Painted
9 Top cover/bottom cover	EN10130 sp 1,2 mm	Painted

Detail A



Detail B



DEGREE OF PROTECTION

IP 30 protection as per standard EN 60529 (suitable for inside use).

CAPACITY

Maximum static safe load 1000 Kg.

SUPPORTING STRUCTURE (1)

Made of steel metal sheet, which can be totally disassembled. It has four poles with holes to fix the accessories.

DOOR / GLASS / BLANK (4-5-6-7)

Made of a steel metal sheet structure or mesh or tempered glass safety plate (5 mm) glued and riveted to the structure. Every crystal undergoes a quenching process, therefore should it break by accident it will shatter into minute harmless pieces.

Black retractable handle with plastic lever, point of closure with key lock. Retractable front-back door, with hinges opening 135° reversible on both sides.

BLANK SLOT COVER

Made of a steel metal sheet structure, set-up for the grounding system, quickly removable, can be closed with a key / cam lock key.

FRAMES (8) (Detail B)

Made of a metal sheet structure.

ZINC PLATED RACK 20/10 (Detail A)

Plate structure, with double holes for cage nuts.

TOP COVER AND BOTTOM COVER

Made of a steel metal sheet structure with an opening for the cables. Further 19" opening closed by blank covers. It is possible to insert one or two groups of forced ventilation. Doors and covers are interchangeable and can be assembled on the four sides.

INTERCHANGEABLE

Doors and covers are interchangeable and can be assembled on the four sides.

WALL CABINETS

SERIES

BALZAC



Balzac. The new and revolutionary wall rack cabinets for small and medium wiring. Thanks to its innovative ergonomic structure it takes only a few minutes to assemble and unassemble it. The side walls can be removed completely, thus making it easy to inspect or maintain the wiring. It can be fixed on a wall with a zinc-plated bracket.



WALL CABINETS

SERIES

BALZAC



BALZAC BLACK
Q9005



BALZAC GRAY
C7035

		Dimensions			
Code	Configurations	H	L	P	U / HE
Black: Q / Gray: C		mm	mm	mm	
A0200Q11	A0200C11	335	600	400	6
A0200Q12	A0200C12	335	600	500	6
A0200Q13	A0200C13	335	600	600	6
A0200Q21	A0200C21	470	600	400	9
A0200Q22	A0200C22	470	600	500	9
A0200Q23	A0200C23	470	600	600	9
A0200Q31	A0200C31	605	600	400	12
A0200Q32	A0200C32	605	600	500	12
A0200Q33	A0200C33	605	600	600	12
A0200Q41	A0200C41	740	600	400	15
A0200Q42	A0200C42	740	600	500	15
A0200Q43	A0200C43	740	600	600	15
A0200Q51	A0200C51	875	600	400	18
A0200Q52	A0200C52	875	600	500	18
A0200Q53	A0200C53	875	600	600	18

HOW WE CREATE OUR CODES

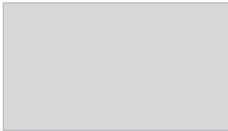
The example refers to a BALZAC cabinet with glass front door, colour Q9005 RAGG

A0200 Q 21

Door and back side configuration colour size

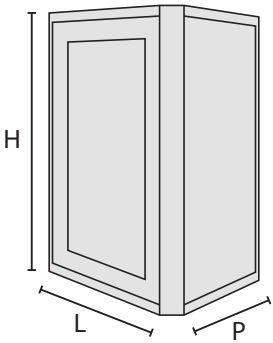


9005 RAGG Q



7035 BUCC C

DIMENSIONS



SERIES

BALZAC



A0200 Glass front glass



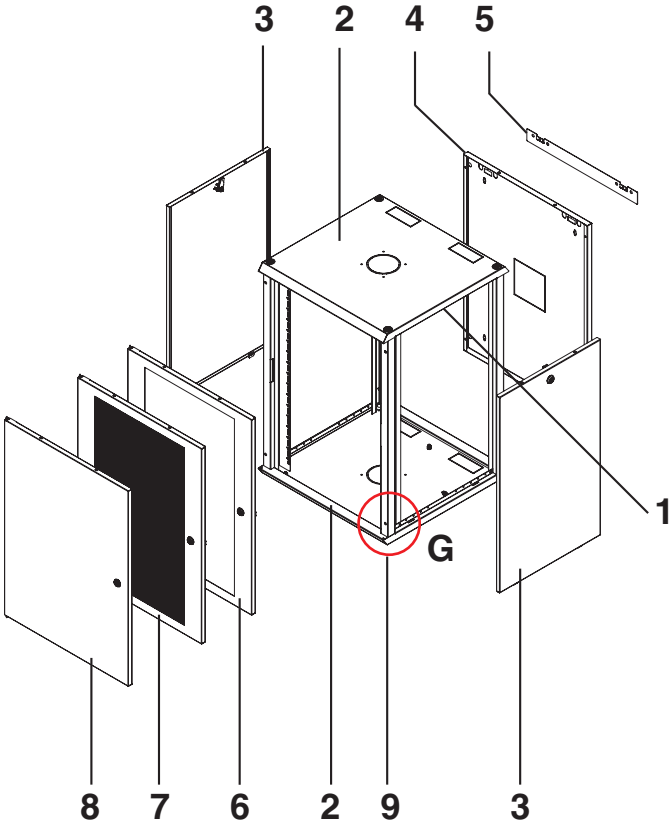
A0272 Mesh front door



A0273 Front blank door

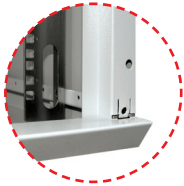


TECHNICAL CHARACTERISTICS



N°Description	Material	Treatment
1 Structure	EN10130 sp 1,2 mm	Painted
2 Top cover/bottom cover	EN10130 sp 1,2 mm	Painted
3 Side panel	EN10130 sp 1,2 mm	Painted
4 Back panel	EN10130 sp 1,2 mm	Painted
5 Wall mount bracket	EN10130 sp 1,2 mm	Zinc plated
6 Glass door	EN10130 sp 1,2 mm Vetrogrigiofumésp.4mm	Painted /tempered glass UNI EN 1288-3
7 Mesh door	EN10130 sp 1,2 mm	Painted
8 Blank	EN10346 sp 1,2 mm	Painted
9 Frames	EN10130 sp 1,5 mm	Zinc plated

Detail G



DEGREE OF PROTECTION

IP 30 protection as per standard EN 60529 (suitable for inside use).

CAPACITY

Maximum static safe load 50 Kg.

SUPPORTING STRUCTURE (1)

Made of steel metal sheet, which can be totally disassembled. It is made of four poles with holes to fix the accessories.

TOP COVER AND BOTTOM COVER (2)

Made of a metal sheet structure with an opening for the cables. Set-up for connecting fans.

SIDE PANEL (3)

Made of a steel metal sheet structure, set-up for the grounding system, quickly removable, it can be closed with a key / T-handle.

BACK PANEL (4)

Made of a steel metal sheet structure, set-up for the grounding system, opening for the cables, quickly removable, holes to fix it on the wall.

WALL MOUNT BRACKET(5)

Steel plate structure, with setup for wall mounting.

MESH DOOR - GLASS - BLANK(6 - 7 - 8)

Made of a steel metal sheet structure or mesh or tempered glass safety plate glued and riveted to the structure. Every crystal undergoes a quenching process, therefore should it break by accident it will shatter into minute harmless pieces. Lock and key. The door is removable through the hinges, they open 180° and they are reversible on both sides.

FRAMES (9) detail G

Plate structure, with double holes for cage nuts.

COMPONENTS AND ACCESSORIES



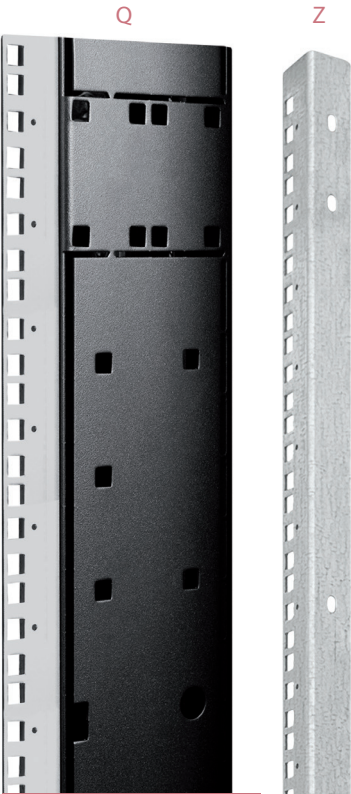




FRAMES / EXTENSIONS / DUCTS

FRAMES AND EXTENSIONS

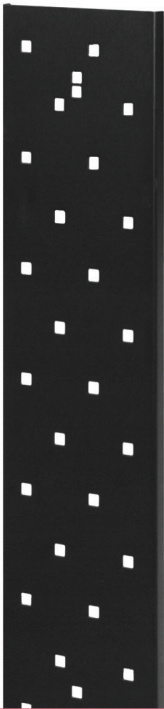
SERIES HEGEL



Code	Description	H	L
A1332Z20	Pair of posts	1200	600
A1332Q21	Pair of extension cord and posts	1200	800
A1332Z30	Pair of posts	1500	600
A1332Q31	Pair of extension cord and posts	1500	800
A1332Z50	Pair of posts	1800	600
A1332Q51	Pair of extension cord and posts	1800	800
A1332Z60	Pair of posts	2000	600
A1332Q61	Pair of extension cord and posts	2000	800
A1332Z70	Pair of posts	2200	600
A1332Q71	Pair of extension cord and posts	2200	800

PERFORATED CABLE DUCT

SERIES HEGEL



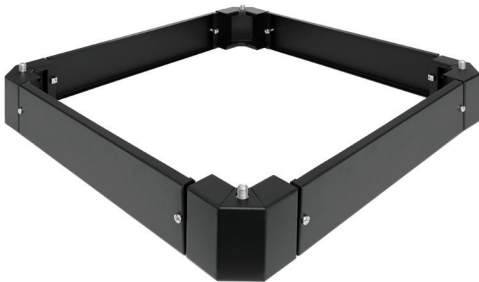
Code	Description	H
A0001Q20	Perforated cable duct	1200
A0001Q30	Perforated cable duct	1500
A0001Q50	Perforated cable duct	1800
A0001Q60	Perforated cable duct	2000
A0001Q70	Perforated cable duct	2200

SOCKETS / PLATES

BASE

Including blank or ventilated plates which can be removed to let the wires pass on 4 sides

SERIES HEGEL



Code	Description	Sizes
A1330Q10	Base H 100	600x600
A1330Q20	Base H 100	600x800
A1330Q30	Base H 100	600x1000
A1330Q63	Base H 100	600x1200
A1330Q40	Base H 100	800x600
A1330Q50	Base H 100	800x800
A1330Q60	Base H 100	800x1000
A1330Q62	Base H 100	800x1200

BASE

Including blank or ventilated plates which can be removed to let the wires pass on 4 sides

SERIES BALZAC

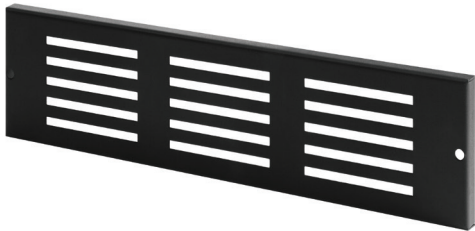


Code	Description	Sizes
A0008Q10	Base H 100	600X400
A0008Q20	Base H 100	600X500
A0008Q30	Base H 100	600X600

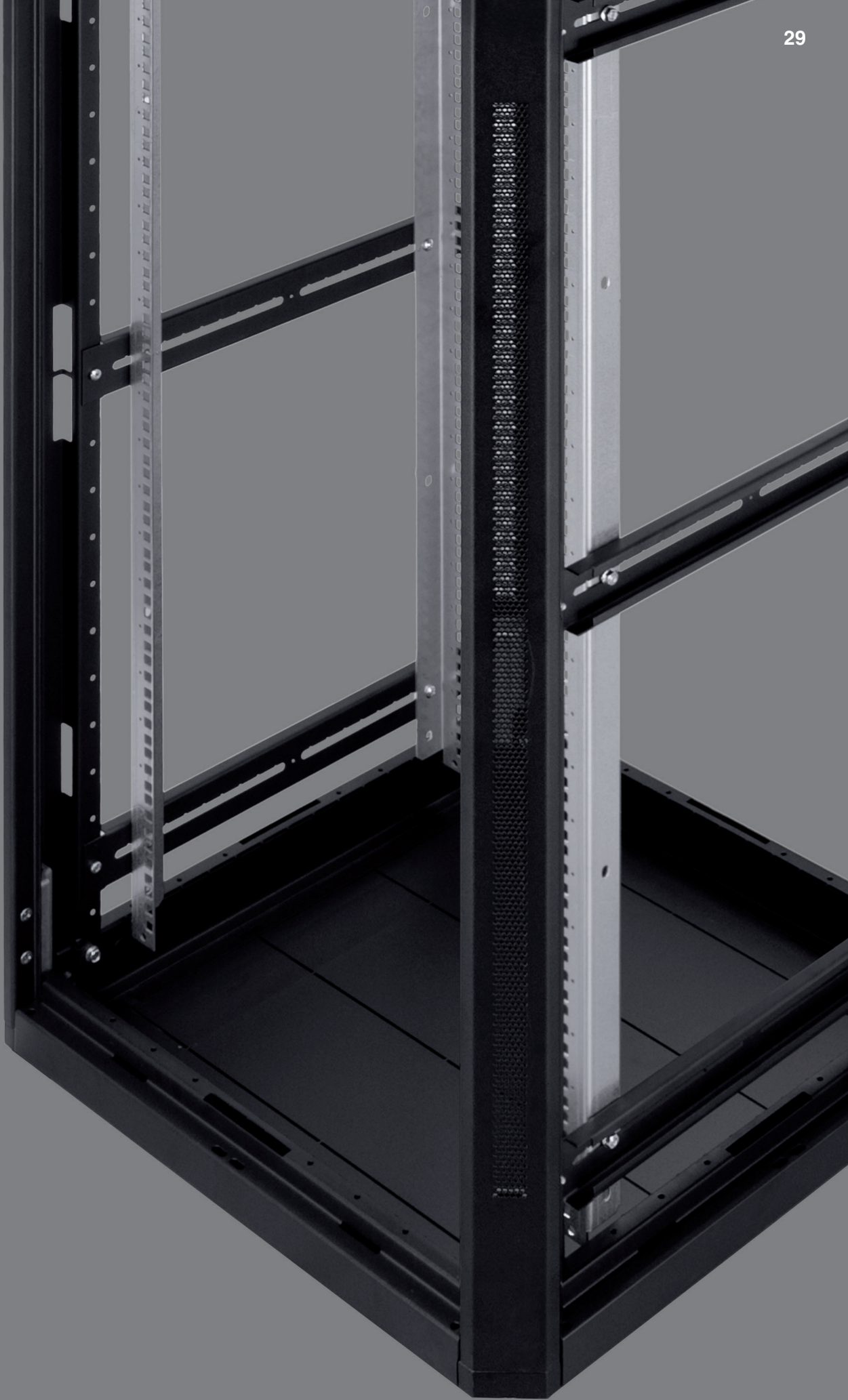
VENTED PLATE

including fasteners

SERIES HEGEL
BALZAC



Code	Description	Sizes
A0523Q01	Vented plate for base / H 100	600
A0523Q11	Vented plate for base / H 100	800
A0523Q12	Vented plate for base / H 100	1000
A0523Q31	Vented plate for base / H 100	1200





WIRES HANDLING/SHELVES

HORIZONTAL WIRES HANDLING

It organizes patch cords and cables



Code	Description	HE
XKIT0000	Kit with 8 rings / H90/ zinc-plated	2
XKIT0013	Kit with 4 rings / H90/ zinc-plated	2
XKIT0034	Kit with 8 rings / H50/ zinc-plated	2
XKIT0035	Kit with 4 rings / H50/ zinc-plated	2



A0658Q86W
Slotted cable management panel 19"
5 H90 2HE rings



A0307Q50
Cable management panel19"
4 1HE plastic rings



A0306Q10
Cable management panel + brushes
19" 1HE



A0306Q20
Cable management panel + brushes
19" 2HE

SHELVES

FIXED 2-POST FRONT MOUNT SHELF

Ventilated at the bottom. Load capacity: 30 kg



Code	Description	HE
A0306Q01	Fixed shelf depth. 150 19"	1
A0306Q02	Fixed shelf depth. 260 19"	2
A0306Q03	Fixed shelf depth. 310 19"	2
A0306Q04	Fixed shelf depth. 360 19"	2
A0306Q06	Fixed shelf depth. 410 19"	2
A0306Q08	Fixed shelf depth. 600 19"	2

FIXED 4-POSTS SHELF

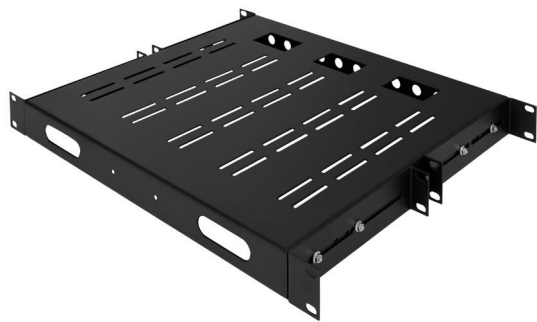
Ventilated at the bottom. Load capacity: 80 kg.



Code	Description	HE
A0308Q06	Fixed shelf depth. 410 19"	2
A0308Q07	Fixed shelf depth. 510 19"	2

FIXED BUILT-IN SHELF

Kit with 4 brackets is included. Ventilated at the bottom.
Load capacity: 80 kg.



Code	Description	HE
A0686Q04W	Fixed shelf depth. 400 19"	1
A0686Q06W	Fixed shelf depth. 600 19"	1
A0686Q08W	Fixed shelf depth. 800 19"	1

SHELVES

TELESCOPIC SHELF

Ventilated at the bottom. Load capacity: 80 kg.



Code	Description	HE
A0312Q01	Telescopic shelf 500 - 900	1

SLIDING DRAWER WITH 4 CONNECTIONS

Load capacity: 20/50 Kg



Code	Description	HE
A0310Q05	Sliding drawer with 4 connections / depth. 410 19"	2
A0310Q06	Sliding drawer with 2 connections / depth. 410 19"	2

BUILT-IN MOUSE SHELF

Mouse and keyboard not included. Load capacity: 20 Kg



Code	Description	HE
A0311Q03	sliding drawer for mouse and key-board 19"	1

DOCUMENT HOLDER DRAWER

Sliding drawer. Load capacity: 20 Kg

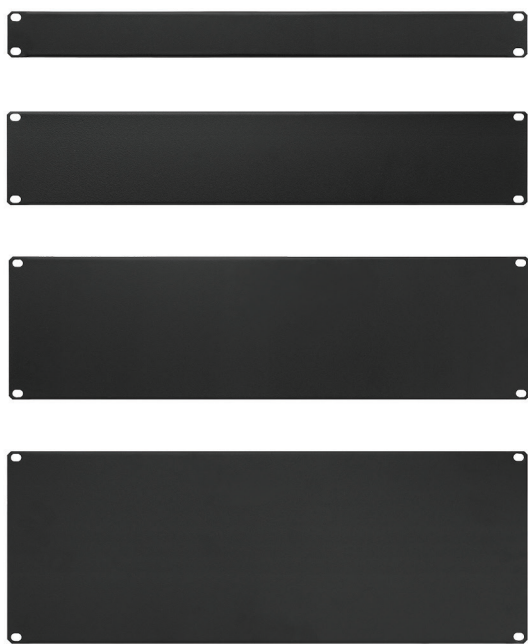


Code	Description	HE
A0319Q00	Document holder drawer19"	2

PLATES / PANELS

BLIND PANEL

It closes the rack unit which is not being used.



Code	Description	HE
A0003Q10	Blind panel 19"	1
A0003Q20	Blind panel 19"	2
A0003Q30	Blind panel 19"	3
A0003Q40	Blind panel 19"	4

PLATES FOR LSA SYSTEM

They support LSA connection or dissection modules.
10 couples not included, rearward assembly.

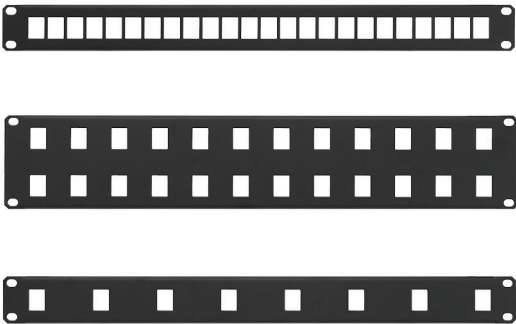


Code	Description	HE
A0390Q01	Plate for max 3 modules LSA 19"	1
A0390Q02	Plate for max 9 modules LSA 19"	2
A0390Q03	Plate for max 15 modules LSA 19"	3

PATCH PANELS

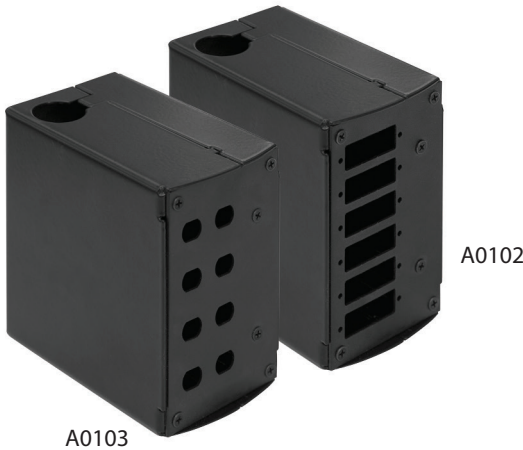
UTP/STP

They are suitable for RJ45 connectors



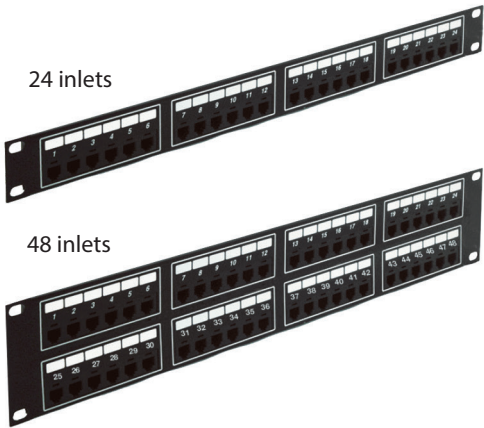
Code	Description	HE
A0338Q13	Empty panel for rj-stp 8 pos. Zin.	1
A0338Q07	Empty panel for rj-utp 8 pos.	1
A0338Q14	Empty panel for rj-stp 16 pos. Zin.	1
A0338Q02	Empty panel for rj-utp 16 pos.	1
A0338Q15	Empty panel for rj-stp 24 pos. Zin.	2
A0338Q01	Empty panel for rj-utp 24 pos.	2
A0338Q00	Empty panel for rj-stp 24 pos. Zin.	1
A0338Q03	Empty panel for rj-utp 24 pos.	1

DIN BOX



Code	Description
A0103Q00	DIN BRASS BOX 8ST
A0102Q00	DIN BRASS BOX 6SCDX

COMPLETE PATCH PANELS



Code	Description	HE
X0678Q01	Complete patch panel RJ-uPT cat.6 24 inlets	1
X0678Q09	Complete patch panel RJ-uPT cat.6 48 inlets	2

TEMPERATURE CONTROL SET

TEMPERATURE CONTROL PANEL



Code	Description	HE
A0004Q00W	Ventilations control panel 19"	1

FANS



Code	Description	HE
X0689Q01	Complete air circulation unit 2 fans	3
X0689Q22	Air circulation unit 2 fans	3
X0689Q03	Air circulation unit 3 fans - CE	3

FAN KIT



Code	Description
XKIT0019	Spare set for fan
XKIT0050	Spare set for fan + cable

FIBER OPTIC DRAWERS



Fiber optic drawer

Code	Description	HE
A0313Q03	Fiber optic drawer 4 MOD. P300 19" / 9005	1

Modules (provided with mounting kit)

Code	Description
A0779V06W	Empty optical module 6 pos. SC (1x) / LC (2x)
A0779V07W	Empty optical module 6 pos. ST
A0779V08W	Empty optical module 3 pos. . SC (2x)



Code	Description	HE
A0313Q32	Fiber optic drawers P250 19" 24 SCDX	1



Code	Description	HE
A0313Q33	Fiber optic drawers P250 19" 12 SCDX	1

FIBER OPTIC DRAWERS



Code	Description	HE
A0313Q30	Fiber optic drawer P250 19" 24	1



Code	Description	HE
A0313Q31	Fiber optic drawer P250 19"	1



Code	Description	HE
A0313Q06	Fiber optic drawer 10" 10 SC P200 FT	1

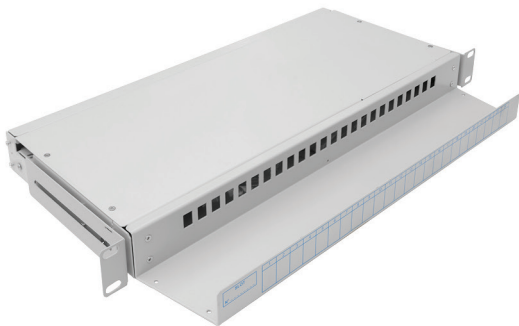


Code	Description	HE
A0313Q07	Fiber optic drawer 10" 10 ST	1

FIBER OPTIC DRAWERS

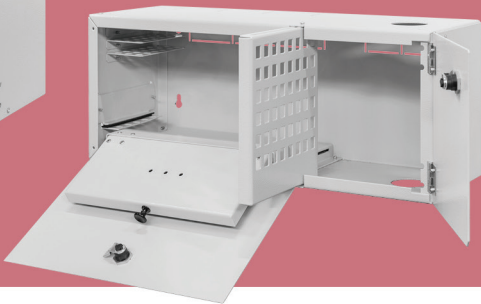


Code	Description	HE
A0313C34	Fiber optic drawer 19" 24SC DX / 7035	1



Code	Description	HE
A0109F00	Est. P280 S2 7035 semi-opaque smooth sliding Drawer	1

CSOE FIBER OPTIC CONTROL UNIT



Code	Description
A0112C00	Drawer CSOE 48RJ EST R7035 BUC.

WALL FIBER OPTIC DRAWER



Code	Description
A0379C02	Wall fiber optic drawers 2A 25357 / 7035

All the components can be available in two colours:  Q9005 Wrinkling paint colour code Q /  C7035 Textured colour code C/

WHEELS EARTHING SET / LEGS

WHEELS EARTHING SET



Code	Description
X0587P00	Wheels earthing set x for rack cabinet (4 cables)

LEGS

Including connections and fasteners they can be installed without base



Code	Description	Series
X0583G02	4 Legs Set H. 35	Hegel
X0583G04	4 Legs Set H. 70	Balzac

FASTENERS KIT



Code	Description
X0595Z10	Kit of 50 cage nuts and 50 m6 screws

POWER STRIPS / WHEELS

POWER STRIPS



Thermal magnetic circuit breaker



Light switch

Code	Description
X0677Q01	Power strips 6 outlets + horizontal light switch
X0677Q16	Power strips 8 outlets + horizontal light switch
X0677Q10	Power strips 10 outlets + vertical light switch
X0677Q04	Power strips 6 outlets + horizontal circuit breaker
X0677Q15	Power strips 8 outlets + horizontal circuit breaker
X0677Q11	Power strips 10 outlets + vertical circuit breaker

COUPLING SETS FOR CABINETS

SERIES
HEGEL



Code	Description	Series
XKIT0021	COUPLING SETS FOR CABINETS	Hegel

WHEELS

Including connections and fasteners;
they can be installed without base



Code	Description	Series
X0588G05	Set of 4 swiveling wheels + brake capacity 360 kg	Hegel
X0588G06	Set of 4 swiveling wheels + brake capacity 600 kg	Hegel
X0588G07	Set of 4 swiveling wheels + brake capacity 150 kg	Balzac
X0588G08	Set of 4 swiveling wheels + brake capacity 150 kg	Hegel
X0588G09	Set of 2 swiveling wheels +2 Swivel Wheels with Ca-ster Brake capacity 150 kg	Hegel

ENOLGASITECH. OUR KNOWLEDGE AND CRAFTSMANSHIP MAKES US UNIQUE



We belong to the prestigious Enolgas Bonomi Group

Despite hard investments in machines and production structures, which are typical for our group, we have maintained our “artisan ideals”. Thanks to this fact we are able to always offer something more to our customers. We don’t only produce perfect cabinets from the structural point of view, but we also equip them with culture, history and “soul”. This is why all our products can be adapted in order to better fulfill our customer’s requirements.



ENOLGASITECH. WE ARE WELL KNOWN FOR OUR SOLIDITY



ENOLGASiTECH. We are well known for our solidity. ENOLGASITECH has a 4000 square-meter warehouse and state-of-the-art machines which allow 24-hour production cycles. Our highly expert and creative technicians support and implement production with continuous innovation. Enolgas Bonomi is a group renowned for its reliability composed of 5 industrial companies with business interests all over the world.





ENOLGASITECH S.r.l.
Unipersonale

Via Giardino, 5
25057 Sale Marasino (BS) ITALY
Tel. +39 030 8913668
Fax +39 030 8349483
info@enolgasitech.com
C.F. / P.IVA 03076950983

